

Outcomes after Radiation Therapy for HIV Positive Patients with Invasive Cervical Cancer

Victoire Molinier¹, Florence Huguet², Marcos Ballester², Marina Karmochkine³, Christophe Hennequin⁴, Jean-Jacques Mazon⁵ & Catherine Durdux¹

¹Department of Radiation Oncology, Europ éen Georges Pompidou Hospital, Hôpitaux Universitaires Paris Ouest, Assistance Publique Hôpitaux de Paris (APHP), University Paris V René Descartes, Paris, France

²Department of Radiation Oncology, Tenon Hospital, Hôpitaux Universitaires Paris Est, APHP, University Paris VI Pierre et Marie Curie, Paris, France

³Department of Immunology, Europ éen Georges Pompidou Hospital, Hôpitaux Universitaires Paris Ouest, APHP, University Paris V René Descartes, Paris, France

⁴Department of Radiation Oncology, Saint-Louis Hospital, Hôpitaux Universitaires Paris, APHP, University Paris VII Diderot, Paris, France

⁵Department of Radiation Oncology, Pitié-Salpêtrière Hospital, Hôpitaux Universitaires Paris Est, APHP, University Paris VI Pierre et Marie Curie, Paris, France

Received: November 14, 2017

Accepted: December 1, 2017

Online Published: January 6, 2018

doi:10.5539/cco.v7n1p12

URL: <https://doi.org/10.5539/cco.v7n1p12>

Abstract

Objective: To assess tolerance, local control, and survival outcomes for HIV (human immunodeficiency virus) positive patients with locally advanced cervical cancer (CC) treated with external beam radiation therapy (EBRT) and/or brachytherapy from an Assistance Publique - Hôpitaux de Paris (APHP) retrospective cohort.

Methods: Between 2000 and 2014, 28 HIV positive patients presenting with a non-metastatic CC were treated in one of the five APHP radiation therapy centers. Fifteen patients (54%) underwent primary surgery. Twenty-four patients (88%) received EBRT, with concurrent chemotherapy in 22 cases, and 68% received brachytherapy.

Results: The median follow-up was 58 months. At 5 years, local control (LCR) and overall survival rates (OS) were 56% and 46.5% respectively. A grade 3-4 acute toxicity (mainly hematological toxicity) was reported in 18 patients (64%). In univariate analysis, total irradiation dose ($p=0.03$) and cisplatin-based chemotherapy ($p=0.005$) were predictive of acute toxicity. A grade 3-4 late toxicity (mainly gastro-intestinal and renal) was observed in 7 patients (25%). In univariate analysis, HIV stage at diagnosis ($p=0.02$) and an initial CD4 count $<200/\text{mm}^3$ ($p=0.03$) were predictive factors of late toxicity.

Conclusion: In this study including HIV positive patients with CC, local control and overall survival rates seemed to be lower than those reported in the literature for non-HIV patients. We also reported an increase in acute and late toxicity, mainly hematological, underlying the fundamental role of immunosuppression in tolerance to radiation therapy.

Keywords: AIDS, HIV, cervical cancer, radiation therapy

1. Introduction

Cervical cancer (CC) is the second most common cancer in women worldwide with a global annual incidence of 528 000 new cases. With an estimated mortality of 266 000 deaths each year, CC remains one of the leading causes of cancer and cancer mortality among women in the developing world, including women infected concurrently with human papilloma virus (HPV) and human immunodeficiency virus (HIV) (Ferlay et al., 2015, Awolude, Morhason-Bello, Denny & Adewole, 2013). In France, in 2014, there were an estimated 3028 new cases and 1102 deaths due to CC (Bulletin épidémiologique hebdomadaire, 2014). HIV-infected women are more likely than uninfected women to develop cervical HPV infections and to progress through preneoplastic stages to CC (Chaturvedi, Madeleine, Biggar & Engels, 2009). HIV-infected women with a CD4 cell counts lower than $200/\text{mm}^3$ are eight times more likely to develop CC (Abraham et al., 2013). Highly effective anti-retroviral therapy (HAART) increases overall survival (OS) among HIV-infected women but does not

prevent them from developing CC. Since 1999, several studies have reported that chemoradiation therapy (CRT) was superior to radiation alone (Keys et al., 1999, Whitney et al., 1999). In 2002, a meta-analysis confirmed that CRT with weekly cisplatin was associated with 6% improved survival for patients with locally-advanced CC. CRT is now the standard of care for IB2-IVA stages CC. However, CRT is associated with an increased hematological and gastrointestinal acute toxicity. In HIV-patients, chemoradiation is a challenge for the oncologist and the immunologist: to cure malignancy, to minimize treatment toxicity and to control HIV-related opportunistic infections. HIV-infected women treated with CRT may be at increased risk for infectious morbidity due to immunosuppression and drug interactions between HAART and chemotherapy. There is not much data available about outcomes and toxicity of CC in HIV-infected patients, so this retrospective study aims to assess tolerance, local control, and survival outcomes in HIV-infected patients with invasive CC treated by external beam radiation therapy (EBRT) and/or brachytherapy in an Assistance Publique - Hôpitaux de Paris (APHP) retrospective cohort.

2. Materials and Methods

2.1 Patient's Records

Between January 2000 and December 2014, 28 HIV-infected patients with CC treated by EBRT and/or brachytherapy in one of the five radiation oncology departments of the APHP were evaluated. In situ carcinomas and IA FIGO stage were excluded from the study. We reviewed retrospectively patients' charts for demographic data, tumor location, tumor histology, tumor and nodal stage as detected by computed tomography (CT) or positron emission tomography-CT (PET-CT). Prior use of HAART and CD4 cell counts at the start of treatment were documented. Details of the treatment received by the patient, its response, acute and late toxicities, and complications of HIV were also studied. Disease staging was defined according to the 2009 International Federation of Gynecology and Obstetrics (FIGO) (National Comprehensive Cancer Network, 2012). The hospital's Institutional Review Board approved this study.

2.2 Treatment Strategies

The decision to perform para-aortic lymphadenectomy staging from stage FIGO IB2 was taken by multidisciplinary board depending on comorbidities of the patient and lymph node involvement on imaging assessment. In case of lymph node involvement on the PET-CT, lymphadenectomy staging was not indicated.

2.2.1 Chemoradiation Therapy

The decision of CRT was taken by multidisciplinary tumor board. Patients were treated with three-dimensional conformal EBRT (3D-EBRT) or intensity-modulated radiation therapy (IMRT). A planning CT scan was required to define target volumes. Pre therapeutic pelvic magnetic resonance imaging (MRI) and/or ¹⁸F-FDG PET-CT were fused with the planning-CT to determine the Gross Tumor Volume (GTV) and the Clinical Target Volume (CTV). The target volumes and organs at risk were defined according to the ICRU 50 or 83 Report (Chavaudra & Bridier, 2001, Hodapp, 2012). Customized blocks or multileaf settings were used to minimize the radiation dose to the normal tissues. The prescription dose to the Planning Target Volume (PTV) was 44-51 Gy in 22-28 fractions of EBRT to the pelvis. EBRT was given in 1.8 to 2 Gy per fraction five days a week. A boost of 9-16 Gy was given on involved pelvic lymph nodes and/or parametrium. If brachytherapy was not feasible, a boost of 9-20 Gy was delivered on cervical tumor. If involved, the para-aortic nodes (PAN) field received 45 Gy in 1.8 Gy per fraction after the pelvic radiation therapy (RT). Hypofractionated regimen could be discussed.

If renal function allowed, 40 mg/m² cisplatin was given weekly. If calculated glomerular filtration rate (GFR) was < 50 mL/min, weekly carboplatin area under the curve (AUC) 2 was used.

2.2.2 Brachytherapy

Depending on the availability in each center, low-dose rate (LDR) or high-dose rate (HDR) brachytherapy was planned after EBRT according to the dose recommendations (Lee et al., 2012, Viswanathan & Thomadsen 2012, Viswanathan et al., 2012). The total doses of EBRT, LDR or HDR were calculated using the Equivalence software developed by the GEC-ESTRO with the Embrace protocol (EMBRACE). Overall treatment time recommended was 56 days or less (Krebs, Maillard, Gaillot-Petit, Ortholan & Nguyen, 2015, Perez, Grigsby, Castro-Vita, & Lockett, 1995, Fyles, Keane, Barton & Simm, 1992).

2.3 Assessment of Safety and Efficacy

Reasons for not completing radiation and/or chemotherapy were noted, when available. Acute toxicity was assessed by weekly examination during treatment.

Follow-up was assessed by clinical examination every three months during the two first years, then every six

months during three years and then yearly. Response data were collected at time of examination for brachytherapy planning and on clinical and examination MRI at six to eight weeks following the end of treatment.

2.4 Statistical Analysis

The statistical significance of differences in demographic factors, and clinical parameters was evaluated by means and standard deviations. Chi2 or Fisher's exact tests, when suitable, were used to compare the nonparametric and parametric qualitative data. Quantitative data were compared with Student's test. We decided to group tumor stages into three groups (staging groups): Group 1 for tumors located to the cervix (FIGO stage I), Group 2 for FIGO II and Group 3 for FIGO III and IVA.

Primary endpoint was local control rate (LCR). Secondary endpoints were overall survival (OS), acute, and late toxicities. Toxicity scoring was done using CTCAE v4.

Time to event endpoints including LCR, and OS were computed using the Kaplan-Meier method and compared using the log-rank test. In order to assess the precision of the obtained estimates, multivariable analysis with hazard ratios (HR) and 95% CI were assessed from Cox proportional hazards models.

To identify risk factors of severe toxicity, multivariable logistic regression models were used. Results were expressed as odds ratios (OR) with 95% CI. Variables with P -values ≤ 0.2 on univariate analysis were considered candidates for the multivariable analysis. Differences were assumed to be significant when $P < 0.05$. Analyses were performed using XLSTAT® software version 2016.05.

3. Results

3.1 Patient Characteristics (Table 1)

From January 2000 through December 2014, 28 HIV-infected women with CC were treated by external beam radiation therapy (EBRT) and/or brachytherapy in AHP. Median age was 44 years old (range 24-60). Tumor characteristics are presented in Table 1. At diagnosis, 12 patients (42%) had presented previous opportunistic infections. Twenty-four patients (86%) were treated with an anti-retroviral therapy. Median CD4 cell count was $194/\text{mm}^3$ (range 31-876) with an undetectable viral load in 42% of patients. Eight patients had hepatitis B and/or C virus co-infection.

Table 1. Characteristics of patients.

Characteristics	Total	Group 1		Group 2		Group 3	
		FIGO IB1-IB2 N=11		FIGO II N=11		FIGO IIIB-IVA N=6	
		N	%	N	%	N	%
Mean age (years)	39			44		44	
Mean tumor size (mm)	32.5			46		65	
Pathological type							
SCC	24	10	35.7	8	28.6	6	21.4
ADK	3	1	3.6	2	7.1	0	0
ASCC	1	0	0	1	3.6	0	0
Embolism							
Yes	7	4	14.2	2	7.2	1	3.6
No	9	2	7.2	6	21.5	1	3.6
NE	12	5	17.8	3	10.7	4	14.2
Concurrent chemotherapy							
Yes	22	7	25	9	32.2	6	21.4
No	6	4	14.2	2	7.2	0	0
Imaging Nodal status							
N1	22	3	10.7	7	25	4	14.2
N0	6	8	28.7	4	14.2	2	7.2

Abbreviations: ADK, adenocarcinoma; ASCC, adenosquamous cell carcinoma; N, number of patients; NE, non evaluated; SCC, squamous cell carcinoma.

3.2 Treatment Outcomes

3.2.1 Chemoradiation

Twenty-four patients (86%) received 3D-EBRT. Only one patient was treated with IMRT. The median EqD2 dose given to the pelvis PTV was 45 Gy (range 24-52 Gy). Two patients received a hypofractionated RT. Eight patients received a boost on positive pelvic lymph nodes and/or parametrium with a median dose of 9.5 Gy. A RT boost on the tumor was performed in four cases not suitable for brachytherapy, with a median dose of 16.7 Gy. Two patients received PAN field irradiation due to lymph node involvement on the PET-CT. The median EqD2 dose given to the cervix tumor including centropelvic boost or brachytherapy was 59.7 Gy. Among patients treated with EBRT, 22 had concurrent RT but only four received the chemotherapy with full dose-intensity.

3.2.2 Brachytherapy

Nineteen patients (68%) underwent brachytherapy with a median dose of 20 Gy and 10 Gy respectively for LDR and HDR. Mean overall treatment time for CRT plus brachytherapy was 71 days (range 43-193 days). Only five patients completed the treatment in 56 days or less. Nine patients (32%) did not receive brachytherapy mainly due to delayed healing, necrosis, uterine perforation, or impossible mold application.

3.3 Survival

The median follow-up was 58 months (range 5-150 months). The 2-year LCR rate was 62% for the whole population (Figure 1). After completing EBRT and/or brachytherapy, 21 (75%) patients achieved a complete response and seven (25%) showed progressive disease or no response to treatment. In univariate analysis, staging group (p=0.05), tumor size (p=0.05), and chemotherapy without cisplatin were predictive factor of incomplete response. None predictive factor of response has been identified in multivariable analysis. Five patients (18%) presented a relapse (one local, two local and nodal, and two nodal and metastatic). In univariate analysis, nodal status (p=0.041) was the only predictive factor of relapse. None predictive factor of relapse has been identified in multivariable analysis.

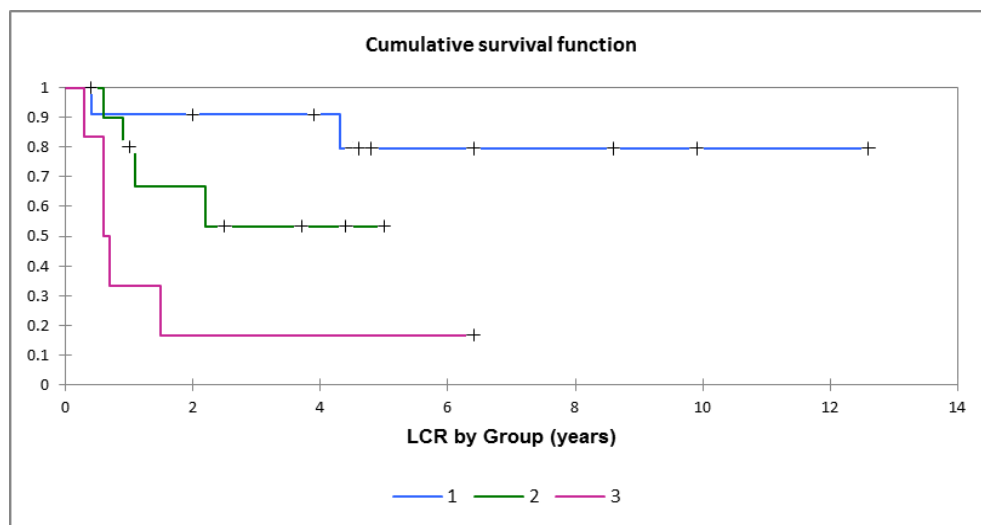


Figure 1. Local control rate (LCR) after stratification by Group. Group 1 for tumors located to the cervix (FIGO stage I), Group 2 for FIGO II and Group 3 for FIGO III and IVA. Patients at risk: Group 1 (11 patients); Group 2 (11 patients); Group 3 (6 patients)

Group	5-year survival		
	Total cases	Cases deceased (%)	p-value
1	11	18.2	0.007
2	11	54.5	
3	6	66.6	

Staging group (p=0.04), nodal stage (p=0.01), irradiation dose (p=0.03), and overall time of EBRT (p=0.04) were predictive factor of worse LCR in univariate analysis. In multivariable analysis, nodal stage (HR=163.5; CI 95% 3.5-7448.7; p=0.009) was the only independent predictive factor of a decreased LCR. A trend of lower LCR was observed for Group 3 (HR=15.2; CI 95% 0.9-258.3; p=0.059) but was not statistically significant.

At the time of analysis, 13 patients died. The 2 and 5-year OS rate were 72.6% and 46.5% respectively. After stratification by staging group, the 2-year OS range from 100% (Group 1) to 25% (Group 3). None predictive factor of OS has been identified in multivariable analysis.

3.4 Toxicity

3.4.1 Acute toxicity

Eighteen patients (64.3%), all treated by EBRT, presented at least one grade 3-4 acute toxicity, mainly hematological. Among these patients, 17 had received concurrent chemotherapy and 2 had PAN field radiation therapy. Nine (32.1%) and fifteen (53.6%) patients developed grade 3-4 leucopenia and lymphopenia, respectively. Lymphocyte and CD4 cell count dropped from 68.5% and 54.7%, respectively. The different types of acute toxicity are presented in Table 2. In univariate analysis, predictive factor of acute toxicity were age ($p=0.03$), EBRT ($p=0.01$), and irradiation dose ($p=0.003$). No death was related to toxicity.

Table 2. Acute toxicity

Grade	Acute toxicity by localization											
	Skin		GI		Renal		Urinary		White cells		Lymphocytes	
	N	%	N	%	N	%	N	%	N	%	N	%
G1-2	2	8	9	32	0	0	1	4	7	25	5	18
G3-4	1	4	0	0	1	4	1	4	9	32	15	54
NE	0	0	0	0	0	0	0	0	1	4	4	14

Abbreviations: G, grade; GI, gastrointestinal; N, number of patients; NE, not evaluated.

3.4.2 Late Toxicity

Seven patients (25%) had at least one grade 3-4 renal and/or gastrointestinal (GI) late toxicities. No patient had grade 3-4 genitourinary toxicity. The different types of late toxicity are presented in Table 3. In univariate analysis, patients with a CD4 count cell $< 200/\text{mm}^3$ were 17 times more likely to develop late toxicity (OR=17.2; CI 95% 1.5-196.3; $p=0.031$). None predictive factor of late toxicity has been identified in multivariable analysis.

Table 3. Late toxicity

Grade	Late toxicity by localization									
	Skin		GI		Renal		Urinary		Lymphocytes	
	N	%	N	%	N	%	N	%	N	%
G1-2	0	0	0	0	0	0	0	0	1	4
G3-4	0	0	4	14	3	10	0	0	0	0
NE	2	8	2	8	2	8	2	8	9	32

Abbreviations: G, grade; GI, gastrointestinal; N, number of patients; NE, not evaluated.

3.5 HIV Complications

Median lower CD4 cell count was $130/\text{mm}^3$ (range 5-251/ mm^3) for the whole population and was mainly reported during the first three months after EBRT start. Five patients (17.9%) presented at least one complication of HIV infection. Among these five patients, two had already developed opportunistic infections before initial diagnosis of CC. One patient presented a Burkitt's lymphoma 27 months after the end of treatment. Another patient presented an anal condylomatosis 53 months after the end of the treatment. Four other patients had infectious bacterial complications (two patients), viral (two patients), or fungal (one patient). Table 4 summarizes main characteristics of patients who had a complication of HIV infection after treatment of their CC.

Table 4. HIV's complications after treatment of CC

Patient	HIV's characteristics at diagnosis				CD4		Complications	
	OI	HIV TTT	CD4 (/mm ³)	VL (copies/mL)	rate 3 months after treatment(/mm ³)	rate 1 year after treatment (/mm ³)	OI type	Delay (months)
Patient 1	Yes	Yes	292	<20	40	185	Cellulitis	27
Patient 2	No	Yes	180	<20	65	96	Anal condylomatosis, vulvar-vaginitis	52
Patient 3	Yes	Yes	180	4x10 ⁵	87	107	Burkitt's medullary lymphoma	24
Patient 4	No	Yes	406	4x10 ⁴	118	260	Chronic genital herpes	9
Patient 5	No	Yes	453	<20	199	377	Sacral herpes, severe sepsis	-

Abbreviations: HIV, human immunodeficiency virus; OI, opportunistic infection; TTT, treatment; VL, viral load.

4. Discussion

The literature regarding radiation therapy related toxicity in HIV-infected women with CC is poor. Our study assessed tolerance, local control, and survival outcomes for HIV-infected patients with invasive CC treated by EBRT and/or brachytherapy. Our median follow-up was longer than four years. Relapses usually happen during the first three years after completion of the EBRT. Our database contained few missing data, which allowed us to study many predictive parameters in univariate analysis. For uni and multivariate survival analyzes, the tumor stage was stratified into three groups according to tumor extensions independently of tumor size, a grouping already used in various publications (Rose et al., 2015, Herrera & Prior, 2013). Thus, stages IB1 and IB2 are analyzed together in Group 1 although their management is usually different. In our study, main characteristics and the therapeutic management of IB1 and IB2 stages were found to be similar. This choice can still be criticized because of the difference in tumor size between the IB1 and the IB2 as well as the risk of lymph node involvement.

The main limit of this study is its retrospective nature. Moreover, the majority of patients included were not born in France (mainly from sub-Saharan Africa). Another limitation of our study is the low number of included patients. We studied 28 patients while the main series published included between 36 and 87 patients (Simonds, Wright, du Toit, Neugut & Jacobson, 2012, Simonds, Neugut & Jacobson, 2015, Ferreira et al., 2017, Shrivastava, Engineer, Rajadhyaksha & Dinshaw, 2005) The four major studies have been carried out in developing countries where the incidence of CCU and HIV is higher than in France.

Demographic and oncologic characteristics seem different between HIV-infected and non-infected women. Patients with HIV positive status are 5-10 years younger in age (Gichangi et al, 2002, Lomalisa, Smith & Guidozi, 2000). In Shrivastava et al. (2005) series, median age of women with HIV-positive CC was 41 years compared to 48 for HIV-negative women.. It points toward the hypothesis that HIV infection shortens the latent period naturally observed in the progression of preneoplastic cervical lesions to CC. Moreover, in our study, lymph node involvement was more frequent, particularly in IB (IB1 22%, IB2 33%) and II (IIA 50%, IIB 44%), respectively, compared with 17% and 12-30% respectively in the general population of the literature confirming the severity of CC in HIV-infected population (Michel et al., 1998, Ayhan, Celik & Dursun, 2008).

4.1 Difficulties of Treatment and Loss of Chance

In our HIV positive population, we found differences in management for locally advanced CC compared to therapeutic standards due to difficulties in performing brachytherapy or bad tolerance of treatment. For the CRT part, the median dose given to the pelvis was 45 Gy, dose similar to those recommended (Simonds et al., 2012, Simonds et al., 2015, Ferreira et al., 2017, Shrivastava et al., 2005) but the median EqD2 dose received by the cervical tumor, taking into account brachytherapy or the centro-pelvic boost was only 59.7 Gy. This dose is lower than the dose of 68 Gy considered adequate after CRT and brachytherapy (Simonds et al., 2012, Simonds et al., 2015). Brachytherapy, indicated in 18 cases (IB2 to IIIB), could not be performed in 9 patients (32.1%) due to complication of CRT.

The mean overall treatment time for the CRT and brachytherapy was 72 days with very large deviations up to 27.5 weeks. However, a spread of more than 56 days is a pejorative prognostic factor for LCR and OS in several published studies (Krebs et al., 2015, Perez et al., 1995, Fyles et al., 1992, Chen, Liang, Yang, Ko & Lin, 2003). Finally, among the 22 patients treated with CRT, a dose-intensity reduction in platinum dose was observed in 10

of the 14 evaluable patients (missing data).

Shrivastava et al. (2005) described a retrospective cohort of 42 HIV positive patients treated at the Tata Memorial Hospital in India. Only 22 patients completed EBRT. Simonds et al. (2012) published a retrospective study of 461 patients treated in South Africa and 59 of whom were HIV-positive. Only 79% of HIV positive patients received a total dose of at least 68 Gy versus 90% of HIV negative patients ($p=0.03$). Only 53% of HIV positive patients received at least four cycles of cisplatin versus 75% of HIV negative patients ($p=0.01$). Overall, 45% of HIV positive patients completed the recommended treatment versus 70% of HIV negative patients ($p=0.001$). These authors showed in a prospective study included 213 patients with 36 HIV-infected women that HIV population received more frequently EBRT alone (without chemotherapy) than the negative HIV population (39% versus 24%, $p=0.01$) (Simonds et al. 2015).

4.2 Survival

Our LCR (61.6% at 2 years) was lower compared to the Vienna series, including HIV negative patients, which was 97% for all stages, and in which very high doses eqD2 (D90 CTV HR > 90 Gy) were delivered with brachytherapy with a toxicity rate lower than 5% (Pötter et al., 2007).

Gichangi et al. (2006) showed that 19% of the patients had residual tumor at 4 and 7 months after EBRT. For these authors, a treatment duration longer than 50 days multiplied the risk of poor response by five (HR=4.4; CI 95% 1.8-13.3; $p=0.001$). In case of residual tumor, treatment was 10 days longer ($p=0.001$). Positive HIV status was associated with an HR of 3.7 (CI 95% 1.3-10.2; $p=0.009$) of residual tumor.

Dryden-Peterson et al. (2016) reported that 3-year survival for HIV positive patients was only 35% in Botswana, a rate lower to our 3-year OS rate, which could exceed 50%. In a non-VIH population, Han, Milosevic, Fyles, Pintilie & Viswanathan, (2013) showed that the 5-year OS rate was decreased in absence of brachytherapy (46% versus 58%), a rate similar to our 5-year OS. Ferreira et al. (2017) described a retrospective cohort of 87 HIV positive patients matched with 336 HIV negative patients on several criteria: age, year of CC diagnosis, FIGO stage, and histological type. In this study, among the 234 deaths, 9% of HIV positive patients died of their AIDS. HIV infection was associated with excess of mortality (HR=2.02; CI 95% 1.27-3.22) and cancer specific mortality (RR=4.35 IC 95% 1.86-10.2) beyond the 1st year following diagnosis.

4.3 Toxicity

In our study, grade 3-4 acute toxicity was observed in 64.3%. Grade 2 and 3 skin toxicity levels were 3.5% and 3.6%, respectively, below the rate reported by Shrivastava et al. (2005) which was 72% and 27%, respectively. These authors reported 14% grade 3-4 GI toxicity while it was zero in our series. Our rate of \geq grade 2 genito-urinary toxicity was 7.2% versus 18% in the TATA Memorial series..Positive HIV status increased the risk of developing multiple toxicities simultaneously (cutaneous, GI, genitourinary) and was an independent risk factor for discontinuation of treatment (HR=2.2 IC 95% 1.1-4.5), $p=0.04$) in the study published by Gichangi et al. (2006). We described 32% of grade 3-4 leucopenia, very similar to the results of the prospective study by Simonds et al. (2015) (31% versus 10% in the HIV negative population ($p=0.003$)). In this series, two factors were predictive of grade 3-4 toxicity: concurrent chemotherapy (OR=4.41 IC 95% 1.76-11.1, $p=0.023$) and positive HIV status (OR=2.16 IC 95% (0.98-4.8), $p=0.05$). No publication has assessed lymphocyte toxicity.

In our series, grade 3-4 late toxicity was 21.4%, exclusively GI or renal.

We failed to find published data comparing late toxicity between HIV positive and negative population. In our study, an initial CD4 cell count < 200/mm³ increased the risk of developing late toxicity by 17, highlighting the role of severe immunosuppression in radiotherapy tolerance. Over the period studied, only one patient was treated with IMRT. At that time, this technique was not recommended in France despite of favorable dosimetric data (Yang et al., 2012). In the intermediate analysis of TATA Memorial Phase III trial with IMRT, with a 20-month median follow-up, a decreased grade 3 late GI toxicity rate was reported in patients treated postoperatively (3.2% versus 17.6% for the 3D-RTC arm, $p=0.02$) for uterine malignancies. The results of the final analysis will be available after a median follow-up of three years (Chopra et al., 2015). But it seems now essential to use IMRT in all patients, especially in HIV positive patients with significant immunosuppression.

5. Conclusion

This retrospective study was carried out from all the HIV patients treated by ionizing radiation at the APHP for a non-metastatic cervical infiltrating cancer. To our knowledge, this is the most important European series reported. It allowed us to study tolerance and outcomes of radiation therapy and/or brachytherapy in this special population. This study appears to show lower local control and overall survival than those reported in the literature for non-HIV patients. There was also an increase in toxicity, particularly hematological, confirming the

fundamental role of immunosuppression in tolerance to radiation therapy. Nevertheless, in the context of a heterogeneous retrospective study with small numbers, these conclusions should be considered with caution.

Acknowledgement

The authors report no conflicts of interest.

References

- Abraham, A., D'Souza, G., Jing, Y., Gange, S., Sterling, T., Silverberg, M., ... Strickler, HD. (2013). Invasive Cervical Cancer Risk Among HIV-Infected Women: A North American Multicohort Collaboration Prospective Study. *JAIDS-J Acquir IMMUNE Defic Syndr*, 62(4), 405-413. <https://doi.org/10.1097/QAI.0b013e31828177d7>
- Awolude, OA., Morhason-Bello, IO., Denny, LA., & Adewole, IF. (2013). Human papillomavirus infection and related cancers in sub-Saharan Africa: burden and tools for prevention. *Vaccine*, 31 Suppl 5.
- Ayhan, A., Celik, H., & Dursun, P. (2008). Lymphatic mapping and sentinel node biopsy in gynecological cancers: a critical review of the literature. *World J Surg Oncol*, 6, 53. <https://doi.org/10.1186/1477-7819-6-53>
- Bulletin épidémiologique hebdomadaire (2014) - Le cancer du col de l'utérus : état des connaissances en 2014. Retrieved from http://www.invs.sante.fr/beh/2014/13-14-15/2014_13-14-15_1.html
- Chaturvedi, A. K., Madeleine, M. M., Biggar, R. J., & Engels, E. A. (2009). Risk of Human Papillomavirus-Associated Cancers Among Persons With AIDS. *J Natl Cancer Inst*, 101(16), 1120-1130. <https://doi.org/10.1093/jnci/djp205>
- Chavaudra, J., & Bridier, A. (2001). Definition of volumes in external radiotherapy: ICRU reports 50 and 62. *Cancer Radiothérapie*, 5(5), 472-478. [https://doi.org/10.1016/S1278-3218\(01\)00117-214](https://doi.org/10.1016/S1278-3218(01)00117-214)
- Chen, S. W., Liang, J. A., Yang, S. N., Ko, H. L., & Lin, F. J. (2003). The adverse effect of treatment prolongation in cervical cancer by high-dose-rate intracavitary brachytherapy. *Radiother Oncol J Eur Soc Ther Radiol Oncol*, 67(1), 69-76. [https://doi.org/10.1016/S0167-8140\(02\)00439-5](https://doi.org/10.1016/S0167-8140(02)00439-5)
- Chopra, S., Engineer, R., Mahantshetty, U. M., Dora, T., Kannan, S., Phurailatpam, R., ... Shrivastava, S. K. (2015). Phase III RCT of Postoperative Adjuvant Conventional Radiation (3DCRT) Versus IGIMRT for Reducing Late Bowel Toxicity in Cervical Cancer (PARCER) (NCT01279135/CTRI2012/120349): Results of Interim Analyses. *Int J Radiat Oncol Biol Phys*, 93(3), S4.
- Dryden-Peterson, S., Bvochora-Nsingo, M., Suneja, G., Efstathiou, JA., Grover, S., Chiyapo, S., ... Lockman, S. (2016) HIV Infection and Survival Among Women With Cervical Cancer. *J Clin Oncol off J Am Soc Clin Oncol*, <https://doi.org/10.1200/JCO.2016.67.9613>
- EMBRACE: An international study on MRI-guided BRachytherapy in locally Advanced CErvical cancer. Retrieved from <https://www.embracestudy.dk/>
- Ferlay, J., Soerjomataram, I., Dikshit, R., Eser, S., Mathers, C., Rebelo, M., ... Bray, F. (2015). Cancer incidence and mortality worldwide: sources, methods and major patterns in GLOBOCAN 2012. *Int J Cancer*, 136(5), E359-386. <https://doi.org/10.1002/ijc.29210>
- Ferreira, M. P., Coghill, A. E., Chaves, C. B., Bergmann, A., Thuler, L. C., Soares, E. A., ... Soares, M. A. (2017). Outcomes of cervical cancer among HIV-infected and HIV-uninfected women treated at the Brazilian National Institute of Cancer. *AIDS Lond Engl*, 31(4), 523-531. <https://doi.org/10.1097/QAD.0000000000001367>
- Fyles, A., Keane, T. J., Barton, M., & Simm, J. (1992). The effect of treatment duration in the local control of cervix cancer. *Radiother Oncol J Eur Soc Ther Radiol Oncol*, 25(4), 273-279. [https://doi.org/10.1016/0167-8140\(92\)90247-R](https://doi.org/10.1016/0167-8140(92)90247-R)
- Gichangi, P., De Vuyst, H., Estambale, B., Rogo, K., Bwayo, J., & Temmerman, M. (2002). HIV and cervical cancer in Kenya. *Int J Gynaecol Obstet Off Organ Int Fed Gynaecol Obstet*, 76(1), 55-63. [https://doi.org/10.1016/S0020-7292\(01\)00560-4](https://doi.org/10.1016/S0020-7292(01)00560-4)
- Gichangi, P., Bwayo, J., Estambale, B., Rogo, K., Njuguna, E., Ojwang, S., & Temmerman, M. (2006). HIV impact on acute morbidity and pelvic tumor control following radiotherapy for cervical cancer. *Gynecol Oncol*, 100(2), 405-411. <https://doi.org/10.1016/j.ygyno.2005.10.006>
- Han, K., Milosevic, M., Fyles, A., Pintilie, M., & Viswanathan, AN. (2013). Trends in the utilization of

- brachytherapy in cervical cancer in the United States. *Int J Radiat Oncol Biol Phys*, 87(1), 111-119. <https://doi.org/10.1016/j.ijrobp.2013.05.033>
- Herrera, FG., & Prior, JO. (2013). The role of PET/CT in cervical cancer. *Front Oncol*, 3, 34. <https://doi.org/10.3389/fonc.2013.00034>
- Hodapp, N. (2012). The ICRU Report 83: prescribing, recording and reporting photon-beam intensity-modulated radiation therapy (IMRT). *Strahlenther Onkol Organ Dtsch Röntgenes Al*, 188(1), 97-99. <https://doi.org/10.1007/s00066-011-0015-x>
- Keys, HM., Bundy, BN., Stehman, FB., Muderspach, LI., Chafe, WE., Suggs, CL., ... Gersell, D. (1999). Cisplatin, radiation, and adjuvant hysterectomy compared with radiation and adjuvant hysterectomy for bulky stage IB cervical carcinoma. *N Engl J Med*, 340(15), 1154-1161. <https://doi.org/10.1056/NEJM199904153401503>
- Krebs, L., Maillard, S., Gaillot-Petit, N., Ortholan, C., & Nguyen, TD. (2015). Total radiation dose and overall treatment time are predictive for tumor sterilization in cervical carcinoma treated with chemoradiation and pulsed-dose-rate brachytherapy. *Brachytherapy*, 14(1), 16-22. <https://doi.org/10.1016/j.brachy.2014.08.051>
- Lee, LJ., Das, IJ., Higgins, SA., Jhingran, A., Small, W., Thomadsen, B., ... Eifel, P. (2012). American Brachytherapy Society consensus guidelines for locally advanced carcinoma of the cervix. Part III: low-dose-rate and pulsed-dose-rate brachytherapy. *Brachytherapy*, 11(1), 53-57. <https://doi.org/10.1016/j.brachy.2011.07.001>
- Lomalisa, P., Smith, T., & Guidozi, F. (2000). Human immunodeficiency virus infection and invasive cervical cancer in South Africa. *Gynecol Oncol*, 77(3), 460-463. <https://doi.org/10.1006/gyno.2000.5775>
- Michel, G., Morice, P., Castaigne, D., Leblanc, M., Rey, A., & Duvillard, P. (1998). Lymphatic spread in stage Ib and II cervical carcinoma: anatomy and surgical implications. *Obstet Gynecol*, 91(3), 360-363. [https://doi.org/10.1016/S0029-7844\(97\)00696-0](https://doi.org/10.1016/S0029-7844(97)00696-0)
- National Comprehensive Cancer Network: Cervical cancer 2012. Retrieved from <https://www.nccn.org/store/login/login.aspx>
- Perez, C. A., Grigsby, P. W., Castro-Vita, H., & Lockett, M. A. (1995). Carcinoma of the uterine cervix. Impact of prolongation of overall treatment time and timing of brachytherapy on outcome of radiation therapy. *Int J Radiat Oncol Biol Phys*, 32(5), 1275-1288. [https://doi.org/10.1016/0360-3016\(95\)00220-S](https://doi.org/10.1016/0360-3016(95)00220-S)
- Rose, P. G., Java, J., Whitney, C. W., Stehman, F. B., Lanciano, R., Thomas, G. M., ... DiSilvestro, P. A. (2015). Nomograms Predicting Progression-Free Survival, Overall Survival, and Pelvic Recurrence in Locally Advanced Cervical Cancer Developed From an Analysis of Identifiable Prognostic Factors in Patients From NRG Oncology/Gynecologic Oncology Group Randomized Trials of Chemoradiotherapy. *J Clin Oncol Off J Am Soc Clin Oncol*, 33(19), 2136-2142. <https://doi.org/10.1200/JCO.2014.57.7122>
- Pötter, R., Dimopoulos, J., Georg, P., Lang, S., Waldh äusl, C., Wachter-Gerstner, N., ... Kirisits, C. (2007). Clinical impact of MRI assisted dose volume adaptation and dose escalation in brachytherapy of locally advanced cervix cancer. *Radiother Oncol J Eur Soc Ther Radiol Oncol*, 83(2), 148-155. <https://doi.org/10.1016/j.radonc.2007.04.012>
- Shrivastava, S. K., Engineer, R., Rajadhyaksha, S., & Dinshaw, K. A. (2005). HIV infection and invasive cervical cancers, treatment with radiation therapy: toxicity and outcome. *Radiother Oncol J Eur Soc Ther Radiol Oncol*, 74(1), 31-35. <https://doi.org/10.1016/j.radonc.2004.11.006>
- Simonds, H. M., Wright, J. D., du Toit, N., Neugut, A. I., & Jacobson, J. S. (2012). Completion of and early response to chemoradiation among human immunodeficiency virus (HIV)-positive and HIV-negative patients with locally advanced cervical carcinoma in South Africa. *Cancer*, 118(11), 2971-2979. <https://doi.org/10.1002/cncr.26639>
- Simonds, H. M., Neugut, A. I., & Jacobson, J. S. (2015). HIV Status and Acute Hematologic Toxicity Among Patients With Cervix Cancer Undergoing Radical Chemoradiation. *Int J Gynecol Cancer Off J Int Gynecol Cancer Soc*, 25(5), 884-890.
- Viswanathan, A. N., & Thomadsen, B. (2012). American Brachytherapy Society Cervical Cancer Recommendations Committee, American Brachytherapy Society. American Brachytherapy Society consensus guidelines for locally advanced carcinoma of the cervix. Part I: general principles. *Brachytherapy*, 11(1), 33-46. <https://doi.org/10.1016/j.brachy.2011.07.003>

- Viswanathan, A. N., Beriwal, S., De Los Santos, J., Demanes, D. J., Gaffney, D., Hansen, J., ... Erickson, B. (2012). The American Brachytherapy Society Treatment Recommendations for Locally Advanced Carcinoma of the Cervix Part II: High Dose-Rate Brachytherapy. *Brachytherapy*, *11*(1), 47-52. <https://doi.org/10.1016/j.brachy.2011.07.002>
- Yang, B., Zhu, L., Cheng, H., Li, Q., Zhang, Y., & Zhao, Y. (2012). Dosimetric comparison of intensity modulated radiotherapy and three-dimensional conformal radiotherapy in patients with gynecologic malignancies: a systematic review and meta-analysis. *Radiat Oncol Lond Engl*, *7*, 197. <https://doi.org/10.1186/1748-717X-7-197>
- Whitney, C. W., Sause, W., Bundy, B. N., Malfetano, J. H., Hannigan, E. V., Fowler, W. C., ... Liao, S. Y. (1999). Randomized comparison of fluorouracil plus cisplatin versus hydroxyurea as an adjunct to radiation therapy in stage IIB-IVA carcinoma of the cervix with negative para-aortic lymph nodes: a Gynecologic Oncology Group and Southwest Oncology Group study. *J Clin Oncol Off J Am Soc Clin Oncol*, *17*(5), 1339-1348. <https://doi.org/10.1200/JCO.1999.17.5.1339>

Copyrights

Copyright for this article is retained by the author(s), with first publication rights granted to the journal.

This is an open-access article distributed under the terms and conditions of the Creative Commons Attribution license (<http://creativecommons.org/licenses/by/4.0/>).